

# CHANGE

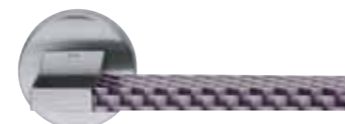
Design: Sandro Santantonio

ottone stampato a caldo - hot stamped brass

FINITURE / FINISHES



**OC+INS05**  
Cromo  
Chrome



**PCS+INS04**  
Power cromosat  
Power satchrome



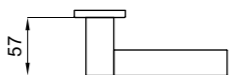
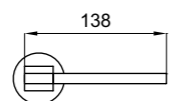
**OBN+INS06**  
Bianco  
White



**ONO+INS03**  
Nero  
Black

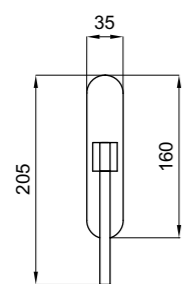


CH16P - ONO+INS07

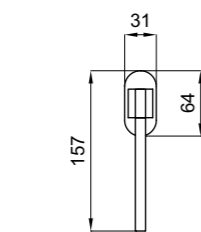


**VIS**  
CH12  
CH12P  
CH12Y  
CH12T

**52**  
CH16  
CH16P  
CH16Y  
CH16T



CH20C  
CH21M

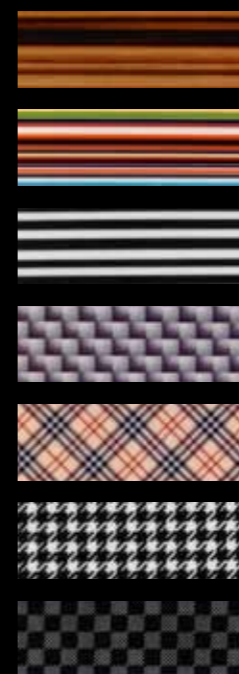


CH22

Inserto 3D image  
3D image insert

# CHANGE

Design: Sandro Santantonio



INS01  
INS02  
INS03  
INS04  
INS05  
INS06  
INS07



INS08  
INS09  
INS10  
INS11  
INS12  
INS13  
INS14

